



**The  
Geological  
Society**

*serving science & profession*

South East Regional Group

Meeting

Date: 22<sup>nd</sup> January 2019

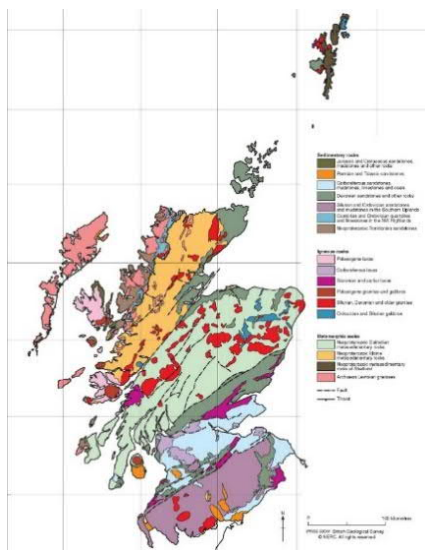
Location: The Bell Inn, Godstone, 18:00 for 18:30 start

## Whisky on the rocks

A talk by Hugh Mallett (Buro Happold Ltd)

Preceded by the SERG AGM

A presentation exploring the relationship between Scottish geology, time and geological processes, Scotland's water and its whisky. The event will include tasting of four very different whiskies and conclude with a testing quiz (with a prize for the winner). The presentation covers – how to taste whisky and how it is made. The geological structure of Scotland is summarised and explained with reference to stratigraphy and the role of plate tectonics. The presentation describes the huge range of strata spanning geological time and the influence of geological processes, both ancient and modern and their role in influencing both the whiskies and the landscape of Scotland.



### Speaker

Hugh is a Chartered Geologist and registered Specialist in Land Condition (SiLC) with over 40 years professional experience including 25 years on contaminated land. He spent the first ten years carrying out geological and geotechnical investigations and assessments followed by four years advising on minerals planning at the DoE. He has provided expert witness evidence, written best practice guidance, delivered training and is a guest lecturer at several universities. He also currently chairs the AGS Loss Prevention Group and am a member of the SiLC Professional and Technical Panel (PTP).

### LOCATION:

The Bell Inn, Godstone, Surrey, RH9 8DX

The event is kindly sponsored by



**Southern Testing**  
Environmental & Geotechnical